

# Student Access and Success: Where the Stars Align

Shah S. Ardalan  
Zack T. Coapland

## NACTC

July 28, 2017



LONE STAR COLLEGE  
UNIVERSITY PARK



*“When Joliet opened its doors,  
it marked the beginning of the  
most accessible form of higher  
education in history”*

*– Dr. George Boggs*



The image features several purple orchid flowers with yellow centers, set against a dark, almost black background. The flowers are in various stages of bloom, with some fully open and others as buds. The lighting is soft, highlighting the delicate petals and the vibrant purple color. The overall mood is serene and elegant.

***Community Colleges:  
Offering infinite hope,  
building America's middle class,  
and promoting social justice.***







LONE STAR  
COLLEGE  
UNIVERSITY  
PARK

# Lone Star College

- **Serving greater Houston area for over 40 years**
- **Over 95,000 Credit and CE enrollment**
- **Largest institution in Texas**
- **One of the fastest-growing community colleges in the nation**
- **11 school districts, 1,400 square miles, and population of 2.1 million**
- **7,700+ employees, 7.15 million square feet**
- **Maintains AAA bond rating with S&P**
  - **\$347 Million Operating Budget**
- **\$3.1 Billion annual economic impact**





# LSC-UP: An Open Invitation-2-Innovate





# **An Environment for Innovation**

## **The College of the Future**

- **Formally HP/Compaq Corp. World Headquarters**
- **2009: Purchased 1.6 million sq. ft. on 71 acres**
- **2010: LSC-University Park opened**
- **2010: LSC-UP University Center opened**
- **2011: Shah Ardalan named CEO of LSC-UP**
- **2011: iSchool High opened**
- **2012: LSC-UP named sixth college**
- **2012: YMCA Childcare Center opened**
- **2014: Energy & Manufacturing Institute opened**

**Also includes Lease space for businesses, Conference Center, Corporate College, System Office,...**







LONE STAR  
COLLEGE  
UNIVERSITY  
PARK

# INVITATION **2** INNOVATE



-  **Student Success**
-  **Teaching Effectiveness**
-  **Community Enrichment**
-  **Culture of Excellence**
-  **Industry Alliance**



LONE STAR  
COLLEGE  
UNIVERSITY  
PARK



# LSC-UP Evolution





**A Model for the Innovative College of 21<sup>st</sup> Century**



**LONE STAR COLLEGE**  
**UNIVERSITY PARK**

**One Location, Many Opportunities.**



LONE STAR  
COLLEGE  
UNIVERSITY  
PARK

# Campus Master Plan (2011)



# Center for Science & Innovation

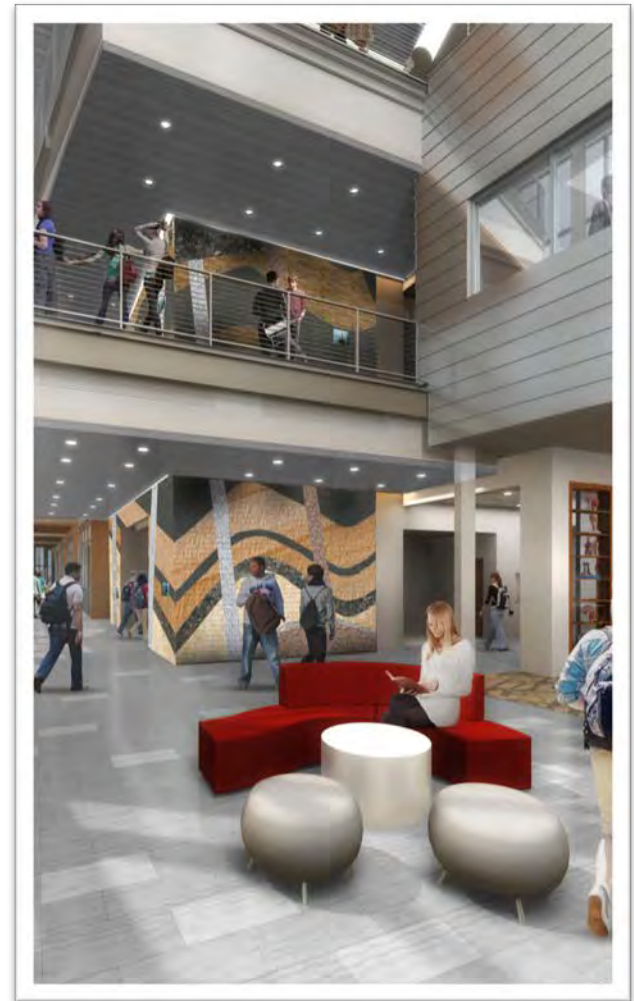
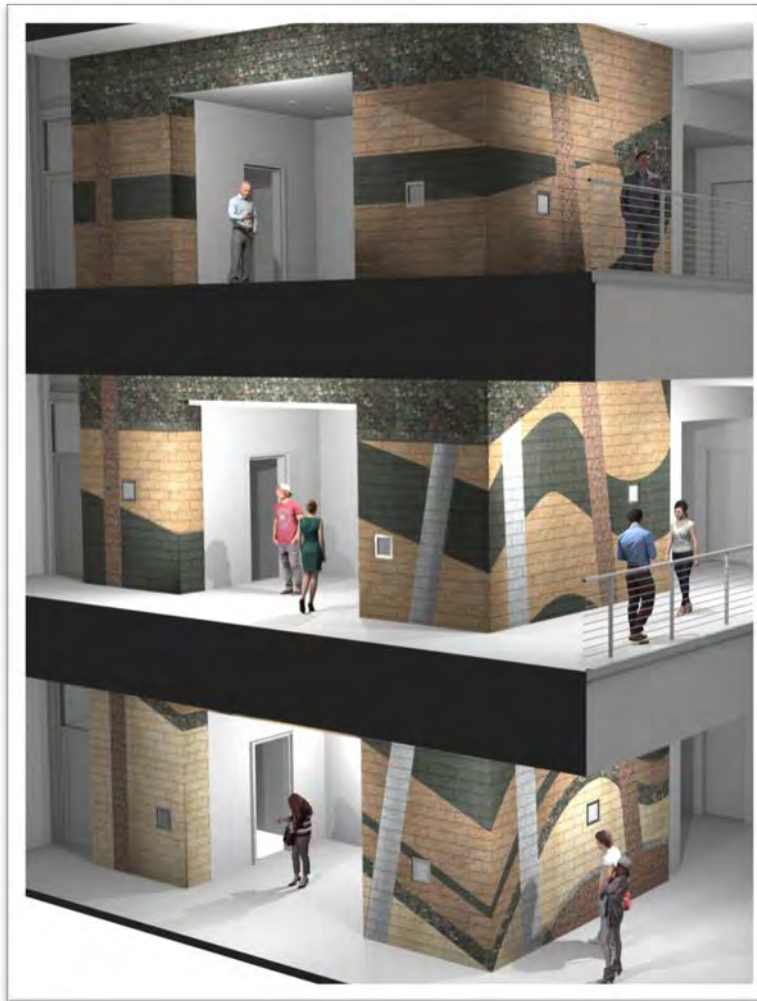


LONE STAR COLLEGE  
UNIVERSITY PARK



LONE STAR  
COLLEGE  
UNIVERSITY  
PARK

# Rock Wall





 **LONE STAR COLLEGE UNIVERSITY PARK** **LION HEART, UP PRIDE**





LONE STAR  
COLLEGE  
UNIVERSITY  
PARK

# Access

- **It's a mindset**
- **It's about stewardship and passion**
- **Why keep doing what every one has been doing?**
- **To the organized go the students**
- **It has to make sense to students**
- **Redefining Community College**

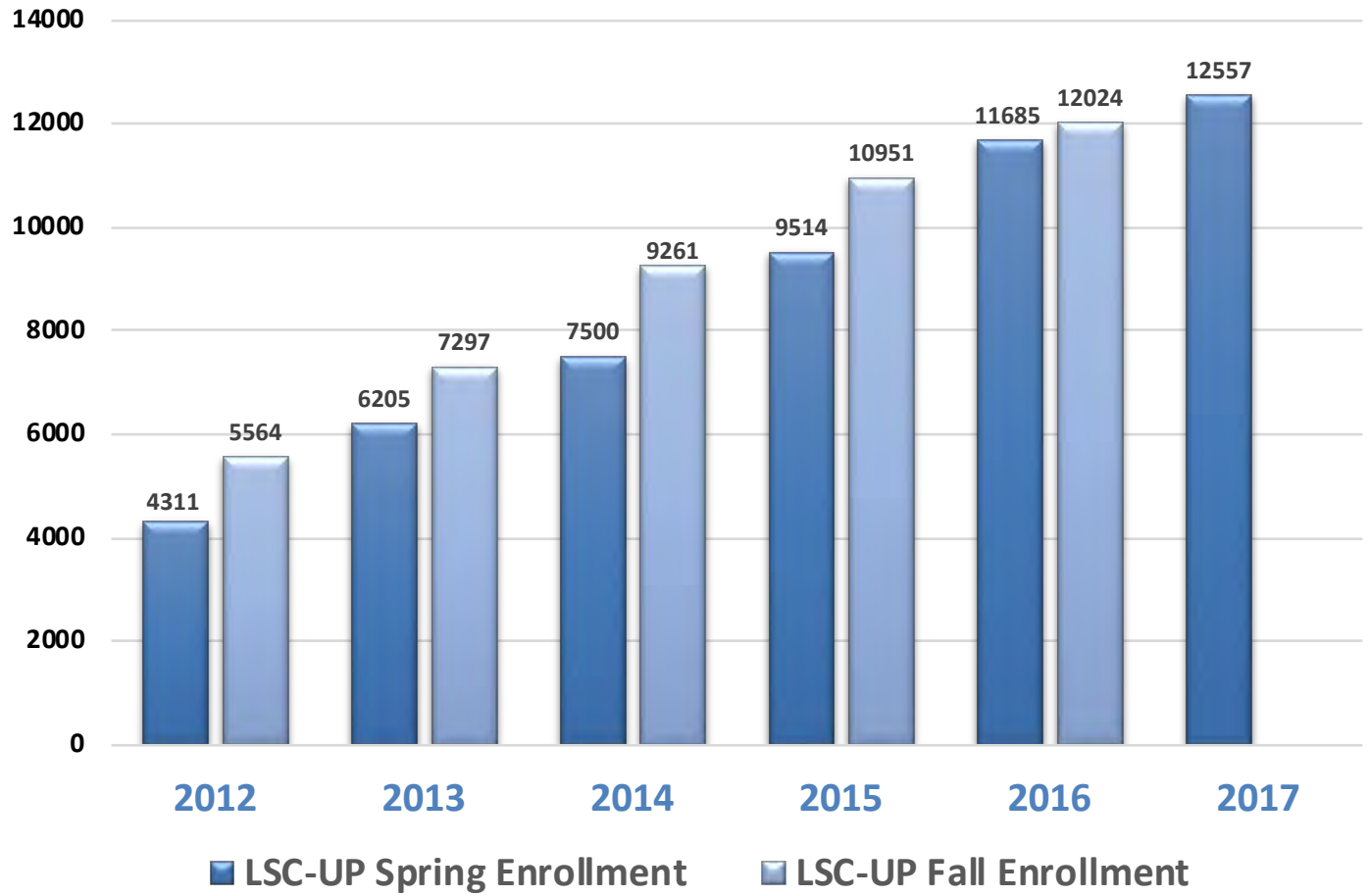






LONE STAR  
COLLEGE  
UNIVERSITY  
PARK

# LSC-UP Enrollment Increase



# STARBUCKS COFFEE



**LONE STAR COLLEGE**  
Affordable • Close to Home • Small Class





LONE STAR COLLEGE

Careers. Not just jobs.

MAGNUM  
Trailers





LONE STAR  
COLLEGE  
UNIVERSITY  
PARK



REGISTRATION  
IS NOW OPEN  
FOR FALL 2017



LONE STAR  
COLLEGE  
UNIVERSITY  
PARK





LONE STAR  
COLLEGE  
UNIVERSITY  
PARK

# Communication with High School Grads

- **College of Choice**
- **Summer Before College**
- **Co-Enrollment In Fall and Spring**
- **December and May Mini-mesters**
- **Summer School**





LONE STAR  
COLLEGE  
UNIVERSITY  
PARK



LSC-University Park • Ready to Roar

# New Student Orientation Instructions

## IMPORTANT:

To sign up online you must complete all required admissions steps first. Please allow at least 48 hours for your test scores to be entered before signing up for your orientation.

STEP

1

**GO TO**  
LoneStar.edu and click  
on MyLoneStar.



STEP

2

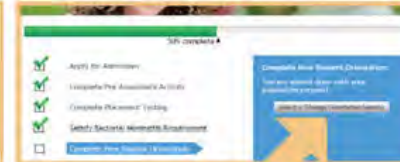
**LOG IN**  
to your account.

Log in to your account and click on the **New Student Orientation** link from your student checklist. (You must complete all other required items before sign-up is available.)

STEP

3

**CHOOSE**  
"Select or Change  
Orientation Session."



STEP

4

**SELECT**  
the preferred location  
(the campus where you  
will attend classes).



STEP

5

**SELECT**  
the preferred  
date and time.

You can log in at any time and change your selected orientation. You will receive a reminder email to your **LoneStar** email account prior to attending orientation.





LONE STAR  
COLLEGE  
UNIVERSITY  
PARK

# Schedule Building

- **Partnerships**
- **Students can't register for classes you don't build**
- **Add Sections throughout Registration Period**
- **Hybrids**
- **Detailed Section Report**
- **Incentives in Certain Sections**



# Geofencing



LONE STAR  
COLLEGE  
UNIVERSITY  
PARK







LONE STAR  
COLLEGE  
UNIVERSITY  
PARK

# Geofencing

- **High School Commencement Venues**
- **Mall During Thanksgiving, Father's Day, Mother's Day Weekend**
- **University Campuses During Early Registration**
- **Youth and High School Sporting Events**
- **Meet 'em where they are and...**
- **When they're bored**





LONE STAR  
COLLEGE  
UNIVERSITY  
PARK

# Klein ISD Partnership

- **Parents University**
- **Paraprofessional AAT Programs**
- **Dual Credit Night**
- **Principal/Counselor Appreciation**
- **Scholarships**
- **New Employee Orientation**





# Student Success

- **Social Justice Mission**
- **State Funding Model**
- **Key Performance Indicators**
- **Start with the Goal in Mind**





LONE STAR  
COLLEGE  
UNIVERSITY  
PARK

# Early Alert Timeline



Submit an Early Alert form when the student has:

- Multiple absences
- Missed assignments
- Difficulty engaging in class
- Changes in behavior
- Experienced personal issues
- Not responded to instructor emails

If you have a concern outside of the ones listed above, contact the Early Alert team.

Early Alert is a referral program for faculty, staff, and students who are concerned about the physical, emotional, academic, or personal health of a student. The Early Alert Program can assess the situation, offer support, and provide referrals to campus resources.

## An Early Alert IS

1. An immediate short-term intervention
2. An optional/professor initiated function
3. A proactive, purposeful request for counseling support
4. A cry for help for one or more of the students in your class
5. A connection to services and resources

## An Early Alert is NOT

1. A punishment
2. A reflection on your teaching
3. An indication of failure
4. A sign that a student is on probation or in "trouble"
5. Included on the students' record or transcript





LONE STAR COLLEGE  
University Area  
COMMENCEMENT 2017



# Children's Academy Scholarship Program

YMCA and Lone Star College-University Park  
Sponsored by Noble Energy





LONE STAR  
COLLEGE  
UNIVERSITY  
PARK





Are You Graduation Ready?

- You set a goal.
- You made a plan.

**DO YOU KNOW WHERE YOU ARE GOING?**

See... about your  
trans... goals.  
advising  
edu







LONE STAR  
COLLEGE  
UNIVERSITY  
PARK

# Advising Cohorts

- **First Time in College**
- **Zero Credits Earned**
- **First Time at Lone Star**
- **60 Plus Credits**
- **14 Hours from Completion**
- **Workforce**





LONE STAR  
COLLEGE  
UNIVERSITY  
PARK

# 30 Credit Rule





LONE STAR  
COLLEGE  
UNIVERSITY  
PARK

# Pathways

**Business &  
Professional  
Services**



**Arts,  
Humanities,  
Communication  
& Design**



**Computer/  
Digital  
Technology**



**Energy,  
Manufacturing  
& Construction**



**Public Safety  
and Human/  
Consumer  
Services**



**Health  
Sciences**



**Social/  
Behavioral  
Sciences &  
Education**



**Engineering,  
Mathematics  
& Sciences**





LONE STAR  
COLLEGE  
UNIVERSITY  
PARK

# Faith-Based Partnerships

- **Event Sponsorships**
- **Admissions and Financial Aid Programs**
- **Student and Family Programs**
- **Safe Space**

